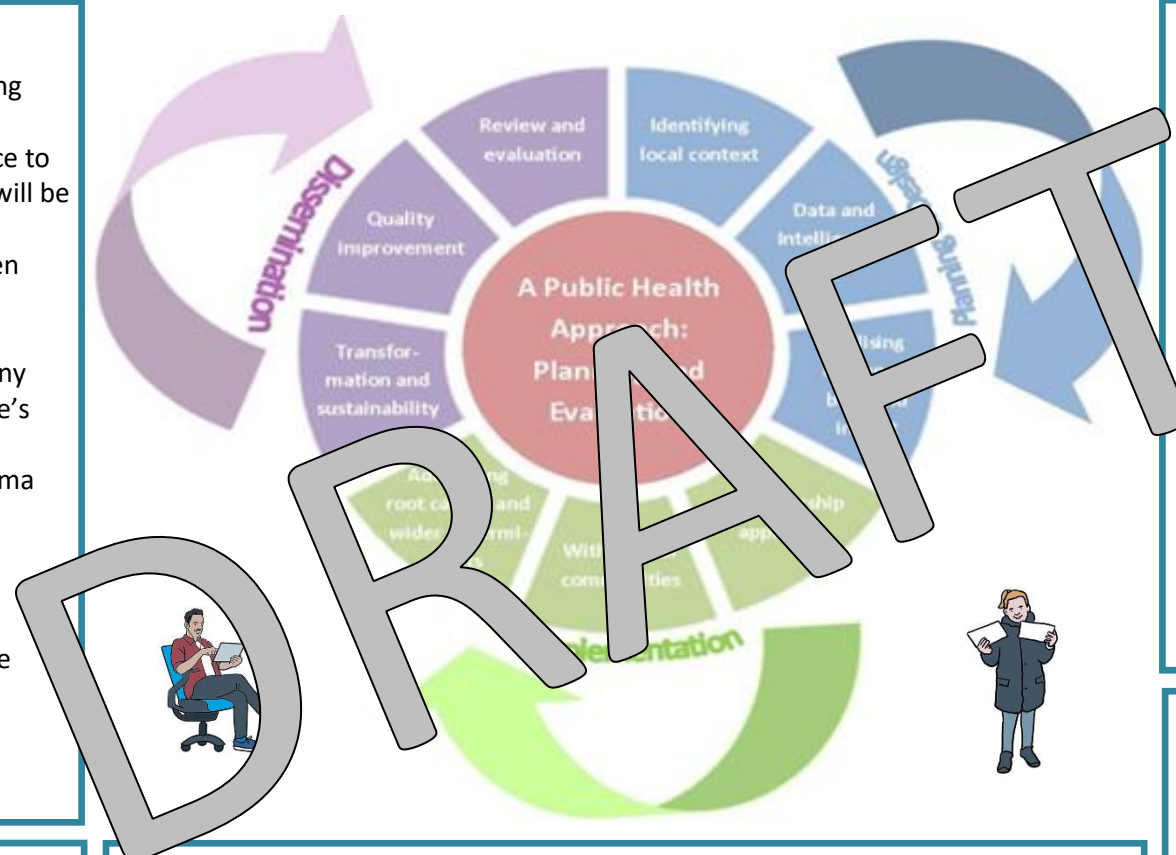


Across West Yorkshire (WY), we will work together to establish a sustainable Adversity, Trauma and Resilience Training Collaborative, to support the success of our ambition for;

West Yorkshire to be a Trauma Informed and Responsive system by 2030 and develop a whole system approach to responding to multiple disadvantage

Outcomes

1. West Yorkshire will establish a sustainable multi agency Training Collaborative for Adversity, Trauma and Resilience.
2. West Yorkshire will have a skilled and knowledgeable workforce to support the system around serious violence, exploitation and will be trauma informed
3. The WY workforce are prepared and able to respond to children and young people who may have experienced or are currently experiencing adversity & trauma
4. The WY workforce will respond early to prevent and address any potential harms and risks relating to children and young people's involvement in serious violence and crime
5. Multidisciplinary peer support network for WY Adversity, Trauma and Resilience
6. All organisation in West Yorkshire becoming trauma-informed
7. ATR Foundation Training for all staff appropriate to job role (including managers and leaders) – akin to safeguarding
8. Embedding trauma informed reflective practice and restorative supervision across all organisations to support the health and wellbeing of the West Yorkshire workforce



Outputs

- WY TI Foundation Adversity, Trauma and Resilience training the trainer resource
- WY TI Coproduction Guidance – Training & E Learning resource
- Training Matrix and Repository of training resources
- WY TI Knowledge and Skills Framework
- WY TI Organisation Resources Pack
- WY TI training package for schools, F.E and Universities
- Multidisciplinary peer support network for WY Adversity, Trauma and Resilience
- System Mapping: training be accessed
- Annual training report with published outcomes
- Adversity Trauma and Resilience Fellowship
- Resources to support:
 - staff health and wellbeing
 - reflective practice
 - restorative supervision

Inputs

- Funding -** VRU Funding
- Capacity -** Central VRU staffing, WY&H ICS Staffing
Additional capacity to be recruited
- Products -** Training Packages & Knowledge Events
Knowledge and Skills Framework
Training Matrix
Training Needs Assessments
Engagement Reports
Case Studies
Evaluation
- Partnerships -** Statutory partners
Existing multi agency partnerships
Third sector and community networks
- Delivery -** Existing interventions programme
- Support -** Experts in trauma, resilience and adversity
Trainers
Public Health registrar

Activities

- Developing the WY multi agency Training Collaborative for adversity, trauma and resilience, supported by trauma informed experts and trained professionals
- Develop and deliver trauma informed training programmes to increase understanding of trauma, awareness of trauma symptoms & how experiences of trauma may influence children's and young people's behaviour and relationships
- Commissioning of specific training pages
- Undertake system mapping for training accessed
- Identify collaborative and match funding to support sustainability
- Supporting local initiatives and priorities through partnership working
- Intelligence and information sharing, collection, and analysis
- Evaluation of ATR informed training
- Develop/deliver trauma informed reflective practice and restorative supervision training across all organisations to support the health and wellbeing of the West Yorkshire workforce

Impact

Systemwide increased capability and understanding of what being trauma informed and responsive means – including consistent use of language:

- Increase awareness of the root causes of adversity and trauma
- Increased capability and capacity of TI workforce
- Early recognition and prevention of adversity and trauma
- Reduction of adversity and trauma
- Prevent systemic traumatisation
- Staff feel supported
- Empowered, engaged workforce
- Safe, healthy, and thriving workforce
- Responsive workforces providing a trauma informed approach to support young people at risk of involvement/involved in serious violence and crime
- Additional capability and capacity to deliver training across West Yorkshire which will be sustainable